

## Team Managers Guide

Helping you and your team make the most  
of Community Care Inform Children

Community Care Inform Children provides you with a wealth of practice guidance, tools, learning, research and legal information in both bite-sized and in-depth formats.

Whether you, or your team, are struggling with a complex case, evidencing or sense checking decisions or developing your practice, our resources are designed to be quick and easy to understand and apply.

There is a range of content on Community Care Inform Children specifically designed for team managers, from supervision support to tools to help with managerial skills such as dealing with conflict in teams.

Here are some of the sections of Community Care Inform Children that may help you:

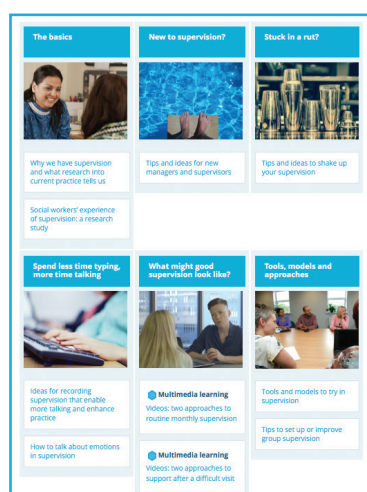
## MANAGEMENT KNOWLEDGE AND PRACTICE HUB



What's on offer:

- Tips for new managers and supervisors, as well as those who are experienced but want to freshen up their practice, such as making discussion of emotion – both the practitioner's and children and families' – central to the supervision process.
- Help in understanding your key responsibilities as a manager, including managing people, finance and resources, and projects.
- Guidance on how to make the transition from practice to management, including how to take a more holistic view of your team's workload, delegate, and exercise authority.

## SUPERVISION KNOWLEDGE AND PRACTICE HUB



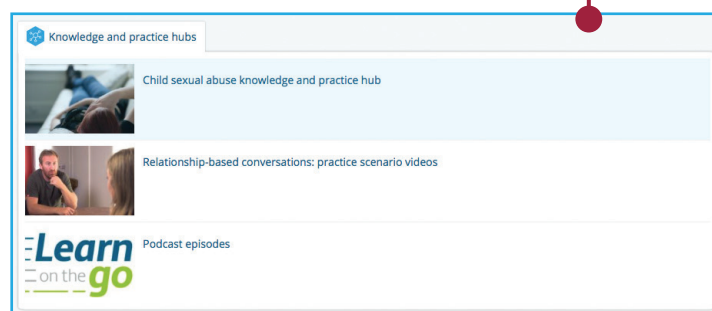
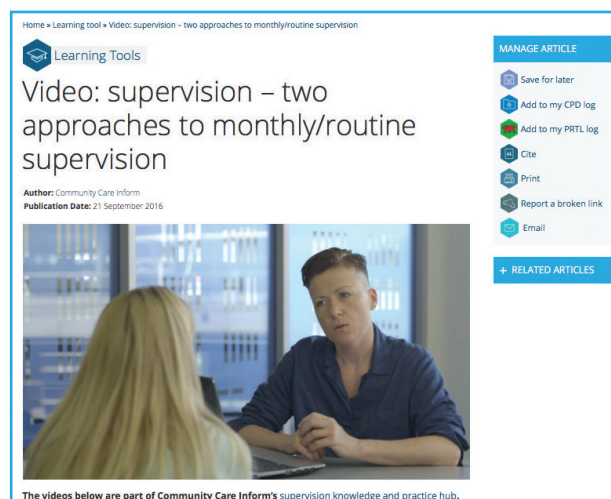
What's on offer:

- How to shift supervision from a 'verbal deluge' of updates from the social worker to focus on addressing their practice dilemmas.
- Advice on meeting requirements to record and provide oversight while creating space for a reflective rather than task-focused approach.
- Ways to make discussion of emotion – both the practitioner's and children and families' – central to the process.

Within this hub we have a video that demonstrates two approaches to monthly supervision

The aim of these videos (and the two further videos showing a supervisor's approaches to a social worker seeking support and advice after a difficult home visit) is to provide examples of what supervision often looks like and how a more reflective approach – incorporating some of the ideas suggested in the supervision hub – could work when discussing cases as part of regular supervision.

These hubs can be found via the search bar or by bringing up our library of knowledge and practice hubs by clicking on knowledge and practice hubs on the main homepage:



## DESIGNED TO GIVE CONFIDENCE TO YOU AND YOUR TEAM

Community Care Inform Children gives practical guidance on a huge range of topics. We take extensive research, legislation and case law and present what this means to practice. The tool is designed to be a 'go to' resource if you or your team ever feel like they need to 'sense check' a decision or need any guidance. It is always worth reminding your team that they have access to Community Care Inform Children as it should enable them to feel more confident in their work.

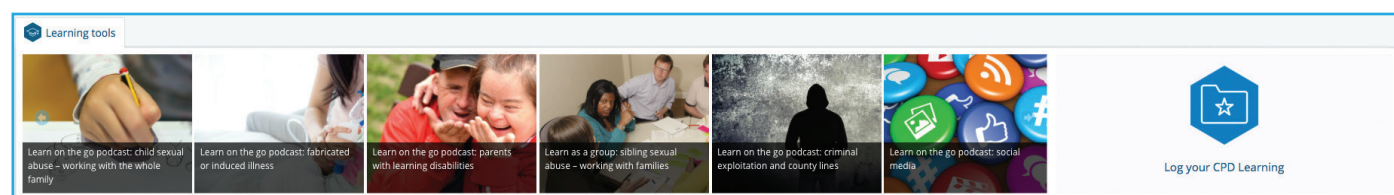
## LEARNING TOOLS FOR YOU AND YOUR TEAM

If you scroll down the main home page you will come to the learning tools section of Community Care Inform Children (or you can find this page through searching 'learning tools' in the search bar)

On this page you will find a collection of some of our most popular tools for individuals or groups of professionals to use in their learning and professional development. The videos, podcasts, webinars, learn as a group CPD sessions, case studies and other resources are featured here to support your team's development.

### Handy tip!

You could ask your team to log their learning in the CPD log on Community Care Inform Children and bring this to supervision.



## 'LEARN AS A GROUP' SESSIONS FOR TEAM MEETINGS

This page can be found from the 'learning tools' page or if you search 'learn as a group' in the search bar.

Our 'Learn as a group' CPD sessions are ready-made resources you can use with a team or group of peers to run a 60 to 90-minute session on a particular topic or area of practice. They use prompts such as short video and audio clips, case studies from practice and serious case reviews as the basis of discussion activities to develop skills and knowledge with colleagues. New interactive sessions will be published regularly so keep checking back for more topics. They are designed to support group learning and work really well as part of a team meeting to prompt reflective discussion and allow practitioners to learn from one another.



CommunityCare  
**inform**Children

**If you, or your team, ever need any help accessing Community Care Inform Children or finding content to support your practice please contact the customer success team:**



[www.ccinform.co.uk](http://www.ccinform.co.uk)



[ccinformhelpdesk@markallengroup.com](mailto:ccinformhelpdesk@markallengroup.com)



020 3915 9444

**Community Care Inform**  
Constantly Creating Improvement

**MA**  
**AG**  
MARK ALLEN GROUP