

Adoption Permanence Planning



- “ensuring the voice of young people sits at the heart of our practice”
- “Work with integrity, honesty, empathy and respect”
- “Adopt a whole family approach, considering the views and wishes of parents and carers and others important to the child and their family network”
- “Focus on the long-term wellbeing”

Why?: Purpose



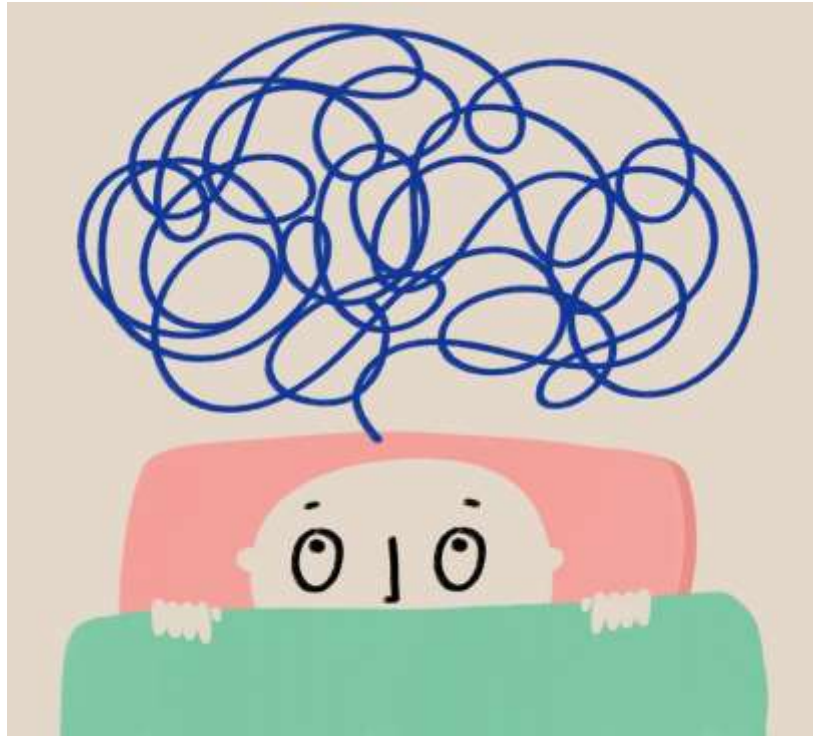
- Court parties
- Agency Decision Maker
- Prospective adopters
- Family finders
- Matching panel

How?: Language



- Do not cut and paste from other reports!
- Explain key terminology
- Write sensitively and thoughtfully

What?: Content



- Empathic truth
- Accurate
- Include experiences in utero
- Include hard and soft information
- Include information from all relevant persons (family time supervisors, nursery/school professionals, family members)

Who?: Relationships



- Who is in the family- cousins/aunts/uncles?
- Relationships and connections to be sustained through proceedings
- Analytical and rationale post-adoption contact plans that is child focused.
- Adoption is not the end of the journey!

Process



- Information recording during adoption planning
 - Who was there on the day they were removed from their parents' care. Who said and did things, what special items came with them?
 - What did the foster carer think of the child when they arrived?
- Photographs throughout adoption planning

Children
first

think
Family

think
Future

be
Sincere

Collaborative
approach